



## Theem 2

### Kev Qhia Qhov

### Kawm Txog Ciaj

### Ciam rau Principals

December 2019

# Vim licas ua qhov Comprehensive District Design?

- MPS qhov kev muaj tam sim no tsis pab ib cov menyuam kawm tau ntaub ntawv zoo.
- Peb ntseeg tias tsis ua dabtsi, nyob twb xywm, thiab ua raws li qub xwb siv tsis tau.
- Peb xav kom prb cov menyuam peb cov menyuam mauj kev paub thiab kev txawj hauv peb fab now: Kev Kawm Txawj Ntse, Kev Txawj Sib Raug thiab Txawj Xav, thiab Kev Haujlwm/Lub Neeg Zoo.

# Cov Ntaub Ntawv Qhia Peb

- Qhov kev tsim uas tam tsim no ntawm lub district muaj tsis tu ncu, tsis thooj cov kev kawm rau cov menyuam raws haiv thiab kev muaj pluag.

MCA Kawm Tau Leb Zoo (2018)	MCA Nyeem TRua Ntawv Zoo (2018)	Qhov Rat Kawm Tiav (2018)
Dawb - 77%	Dawb - 80%	Dawb - 87%
Esxias - 50%	Esxias - 48%	Esxias - 87%
Hispanic - 26%	Hispanic - 27%	African American - 61%
African American - 18%	American Indian - 24%	Hispanic - 57%
American Indian - 17%	African American - 22%	American Indian - 37%

# Theem 1

Qhov kom ua ntawm pawg MPS Board of Education yog ib qho ntawm kev tshawb fawb txog rau peb qhov Comprehensive District Design, MPS tau cog lus nrog rau lub company uas muab cov software rau peb cov kev thauj mus los los ua qhov ciam ciam kev ntsuam xyuas ntawm qhov muaj hauv kev koom ua ke thiab kev thauj mus los yog txhua tus menyuam hauv qib K-8 tau mus kawm hauv lawv lub zejzso tsev kawm ntawv.

# Theem 1

- Ciaj ciam tsev kawm ntawv tau muab ua kom zoo raws haiv thiab kev noj kev hauv los ua ke thiab txo qhov tsis tsim nyog kev thauj mus los.
- Cov tsev kawm ntawv tau muab los tshuaj ntsuam li cov elementary schools (K-5) lossis middle schools (6-8) – nrog rau qhov muaj ntawm sib cais hauv cov chaw tsev kawm ntawv rau cov homphiaj ntawm qhov kev kawm kom paub no. Cov high schools tsis muaj nyob rau hauv qhov kev kawm paub vim lub district tau siv cov Go-To cards.
- Qhov kev xav tau yog tias txhua tus menyuam yuav tau kawm hauv lawv lub zejzos tsev kawm ntawv, li tau hais raws cov ciaj ciam muaj hauv qhov kev kawm paub no.

# Kev Tau Los hauv Theem 1

- Cov tsev kawm ntawv tshaj li 80% txom nyem yuav txo tau los li ob.
- Cov racially identifiable schools ([RIS](#)) yuav txo tau los li tsib. MPS, txawv li lub Minnesota Department of Education, kuj pom tau cov haiv coob yog dawb tsev kawm ntawv.
- Cov tsev kawm ntawv muaj menyuam qis dua 350 tus hauv Koog 1 yuav txo tau ob; cov tsev kawm ntawv muaj qis dua 350 tus menyuam yuav qhib sib npaug thoob rau Koog 1-3.
- Nyob rau nruab nrab, qhov feem pua ntawm tsev kawm ntawv cov menyuam kawm tau zoo tau pom tias nce plaub percentage points hauv leb thiab kev nyeem ntawv.
- 63% ntawm cov menyuam mus rau lub tsev kawm ntawv tshiab. Cov pab pawg ntawm cov menyuam mus sib raws li cov pab pawg menyuam hauv MPS. Tsis muaj ib pab menyuam tsis raug.

# Qhov txuag tau thiab tau los ntawm theem 1

- Tso mus kawm tsev kawm ntawv magnet thiab sijhawm kawm muaj qhov txo tau tus nqi ntawm 20%
- Tsis muaj kev nyuaj ntau hauv cov kev thauj mus los yog qhov zoo rau sijhawm pib kawm (ntawm peb qhov), neeg tsav tsawg, thiab kev nkag rau qhov kev nthuav muaj (tos EDIA), thiab muab tau cov kev pab
- Cov koog taug ko taw lub tswv yim sau npe kawm yuav txhawb tau cov menyuam tsis tawm mus kawm lawm qhov
- Ntxiv peev rau cov cai kev xa menyuam npe mus kawm li EDIA kev tau kom ua

# Cov Kev Tau Los hauv EDIA

Raws li cov kev tau los ntawm kev nrhiav pom **qhov kev ua thiab cov cai tsis zoo, lossis tsis mus sib raws los txhawb lub district cov homphiaj ntawm tsev kawm ntawv kev koom ua ke thiab muab kev pab rau cov tsevneeg los nkag tau rau kev xaiv cov tsev kawm ntawv zoo, pawg EDIA Committee xav tias hloov qhov loj ntawm cov kev ua yuav tsum tau muaj kom los daws tau cov teeb meeb tshwm sim hauv qhov kev nthuav no.**



# Theem 2

Tau los ntsuam xyuas Theem 1 kev tau los ntawm qhov kev kawm paub zejzos tsev kawm ntawv ciam, pawg MPS Board of Education tau txhawb los pib ua theem ob ntawm kev kawm paub, uas nrog rau kev ntxiv cov magnet tsev kawm ntawv rau qhov kev kawm paub los xyuas qhov zoo ntawm kev koom ua ke.

# Board Cov Lus Pom Zoo txog rau Magnets

“Raws tswv yim kev npaj, ua cov ciam rau, thiab sau npe kawm hauv magnet tsev kawm ntawv uas tsim muaj tsev kawm ntawv sib koom yam tsis muaj kev sib cais nyob rau lwm lub tsev kawm ntawv –cov magnet tsev kawm ntawv yuav tsum tau txhawb thiab pab nyiaj raws li muaj”

-MPS Board of Education 10 Hli 7th, 2019

# Magnet Tsev Kawm Ntawv Kev Txhais

**Magnet cov tsev kawm ntawv** tau muab txhais li tias muaj kev qhia zoo los rub cov menyuam los ntawm lwm qhov chaw hauv lub district kom muaj ntau haiv neeg thiab kev tau nyiaj los ua ke. Magnet cov tsev kawm ntawv nkag tau los siv federal integration cov nyiaj, muab tau kev thauj mus los dav tshaj li cheeb tsam kawm, thiab yuav muab tau kev nce kawm mus raws hauv middle school.

# Qhov xav zoo thaum tso rau magnets

- **Kom nkag tau muaj menyuam coob los kawm** los ntawm kev tso npe hauv cov tsev kawm twb nyob ze cov ceeb tsam plawv ntawm lub district, txo tsis muaj kev caij bus deb thoob lub nroog.
- **Cov chaw txaus kawm thiab ib cheeb tsanm zejzos tsev kawm ntawv** los pab cov menyuam muaj ntawm ceeb tsam.
- **Ib qho txo cov number ntawm magnets** ib qhov ua tshem kev nyuaj thauj mus los thiab sib kev pabcuam kom muaj nuj nqis.
- **Hom kev tso kawm ntawm magnets pab cov tswv cuab tau hais rau pab li lawv nyiam:** STEM/STEAM, Arts, Spanish ob hom lus/Lus thiab Kab Lis Kev Cai, thiab Montessori
- **Kev tsuas kho cov qib ntawm K-5 thiab 6-8** -- tsis muaj K-8 tsev kawm ntawv. Qhov kev rau qhov hloov no yog muaj ntau yam ntawm MPS pab cuam tsis tau los kawm zoo li hauv middle school kev muaj hauv kev tsim qib K-8.

## Factors that Families Look For When Choosing a School

	African American/Black (n = 355)	American Indian/ Alaskan Native (n = 232)	Asian (n = 182)	Hispanic/Latinx (n = 420)	Hmong (n = 281)	Somali (n = 157)	White (n = 1897)
The school addresses behavior problems (e.g. fights, drugs, bullying) in a way that meets my family's needs	67.9%	65.1%	59.3%	64.3%	76.9%	68.8%	47.8%
The school addresses discrimination in a way that meets my family's needs	62.8%	56.9%	55.5%	60.7%	66.2%	66.2%	38.1%
The school demonstrates academic excellence	69.9%	66.8%	83.5%	70.5%	69.8%	83.4%	77.4%
The school feels welcoming to my family	78.3%	75%	76.9%	76.7%	69.8%	63.7%	83.6%
The school has a diverse student population	70.4%	63.4%	73.1%	63.6%	47%	56.7%	74.9%
The school has teachers that meet my family's needs	64.5%	63.4%	70.3%	66.7%	70.1%	60.5%	65.8%
The school is in a safe neighborhood	57.7%	53%	63.7%	53.3%	65.1%	66.2%	61.9%
The school offers culturally specific services that meet my family's needs (e.g. Office of Black Student Achievement, Indian Education)	48.7%	57.3%	22.5%	26.2%	39.9%	61.8%	8.8%
The school offers special education services that meet my family's needs	34.4%	38.8%	29.1%	31.7%	45.2%	54.1%	17.2%
The school offers specialized/magnet programming (e.g. Arts, Montessori) that meets my family's needs	36.1%	28.9%	42.3%	35%	45.6%	47.8%	37.5%
The school provides transportation that meets my family's needs	49.3%	58.2%	50%	60.7%	60.9%	68.2%	42.7%
There are other families in the school community like my family	47%	44%	44.5%	38.8%	49.1%	50.3%	34.6%
Other	6.8%	4.3%	11.5%	7.9%	5.3%	16.6%	10.9%



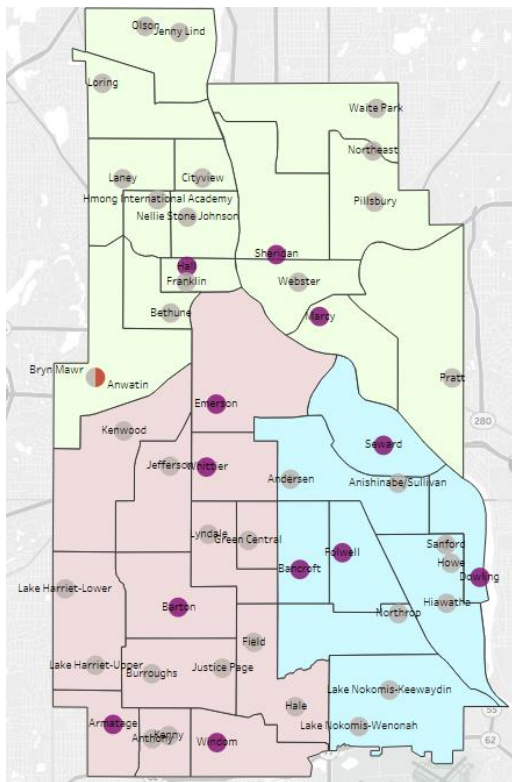
## Programs that Parents Would Consider for their Children

	African American/ Black (n = 355)	American Indian/Alaskan Native (n = 232)	Asian (n = 182)	Hispanic/ Latinx (n = 420)	Hmong (n = 281)	Somali (n = 157)	White (n = 1897)
American Indian Language and Culture	19.7%	73.3%	9.3%	19.8%	9.3%	5.1%	7.8%
Full-Service Community School	42.8%	40.9%	34.6%	45.5%	33.1%	40.1%	34.5%
Hmong Language and Culture	8.2%	6.9%	9.3%	6.4%	74%	5.1%	2.8%
International Baccalaureate (IB)	43.9%	34.1%	57.7%	53.1%	48.8%	31.2%	60.4%
Montessori	34.4%	31.9%	40.7%	34.5%	31.7%	28.7%	45.7%
Music and Arts, including Fine Arts	52.1%	55.2%	58.8%	53.3%	49.8%	21.7%	54.2%
Open	41.7%	40.5%	36.3%	44.5%	27.8%	29.9%	42.6%
STEAM	60%	60.8%	74.7%	60%	61.9%	52.9%	66.8%
Somali Language and Culture	9%	6.9%	6.6%	8.3%	6.8%	71.3%	4.2%
Spanish Language and Culture	16.6%	19.4%	14.8%	55.5%	7.5%	14%	18.4%
Spanish Immersion/Dual Language Programming	22.3%	19.4%	25.8%	62.6%	7.8%	3.8%	36.8%
Urban Environmental	31%	35.8%	33.5%	29%	12.8%	8.3%	42.8%
Other	8.5%	3.9%	8.8%	5%	1.8%	1.9%	6.3%

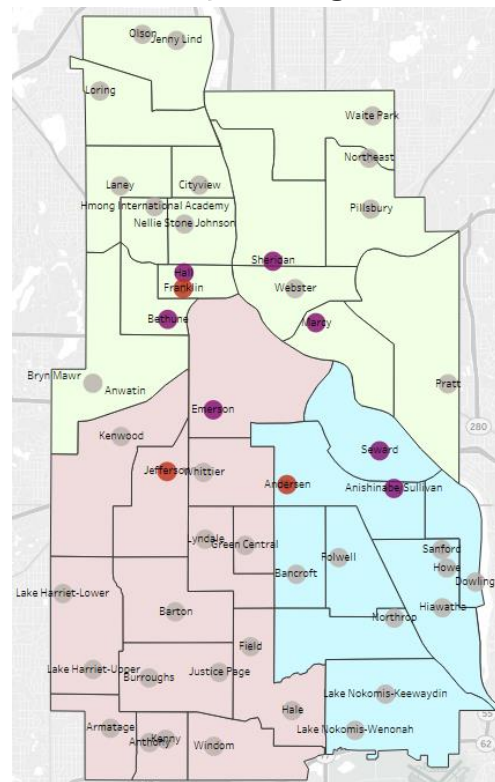


# Tam Sim No vs. Hom Qauv Magnet Cov Chaw

## Tam sim no (2019-20) Magnets



## Hom Qauv Magnets



### Zones

- Zone 1
- Zone 2
- Zone 3

### School Types

- Elementary Magnet
- Middle School Magnet
- Non-Magnet

# Hom Qauv Magnet Chaw - 7 Elementary, 3 Middle

STEM		ARTS		STEAM	IMMERSION (Ob hom lus)	MONTESSORI
Hall K-5	Sullivan K-5	Bethune K-5	Marcy K-5	Franklin 6-8 Jefferson 6-8	Sheridan K-5 Emerson K-5 Andersen 6-8	Seward K-5
*Hall yog tam sim no PYP		*Marcy yog tam sim no Open				

- Qhov no txo 5 lub Elementary magnets los ntawm 12 tam sim no 7 rau hauv qhov hom ua no.
- Qhov no nce ntawm 2 lub Middle Level magnets ntawm 1 tam sim no rau 3 hauv qhov hom ua no.



# Qhov Tau Los Ntawm Theem 2

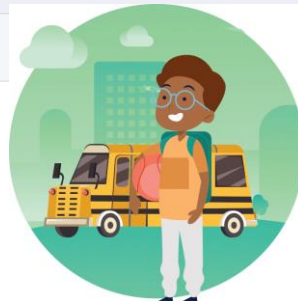
- Cov tsev kawm ntawv tshaj 80% txom nyem yuav txo tau los rau 6 (50%)
- Racially identifiable schools (RIS) yuav txo tau los rau 10 (50%). MPS, txawv lis hauv lub Minnesota Department of Education, kuj xav tias cov ntau yog qhia tau tais cov Dawb tsev kawm ntawv.
- Cov tsev kawm ntawv tsawg dua 350 tsu menyuam yuav txo los ntawm 14 rau 7 (50%). Cov tsev kawm ntawv tsawg dua 350 tus menyuam yuav fab sib npaug mus thob rau Koog kawm 1-3. Yuav tsis muaj cov tsev kawm ntawv uas tsawg tshaj 350 tus menyuam hauv North Minneapolis.
- Ruab nrab, cov tsev kawm ntawv feem pua ntawm cov menyuam kawm tau zoo tau qhia yuav nce mus rau 4 percentage points hauv keb kawm leb thiab nyeem ntawv.
- Muaj kev nkag tau los ntau hauv kev nthuav kawm tom qab kawm ntawv
- Cov hoob coob/tsawg li nyiam txhua zaug muaj tau.

# Theem 2- Haujlwm ua mus ntxiv

- Kho cov ciam ciam thiab/lossis hloov cov qib kawm ntawm kev sau npe hauv cov tsev kawm ntawv kom zoo los sib npaug
  - Peb tab tom ua raws hom LHL, LHU, Wenonah, Keewaydin, Hale thiab Field li uas K-5 lossis sib faib cov chaw kom tsis txhob muaj 6-8
- Kho cov ciam ciam ntawm zejzos tsev kawm ntawv raws li hom ua hauv magnets
- Muaj ntxiv rau thoob nroog kev Kawm Tshwj Xeeb nthuav qhia

# Qhov Ua Tau ntawm Ciaj Ciam Kev Kawm Ua Raws

Tsev Kawm Ntawv Menyuum	Kev Thauj Mus Los	Sijhawm thiab Kev Nthuav Qhia
50% txo hauv cov tsev kawm ntawv raws haiv	Koog kev taug ko taw mus kawm ntawv ze nyob rau hauv cov zejzos tau nyiaj tsawg.	Muaj kev nkag kawm tau yam npaj ua tom qab kawm ntawv
50% txo hauv cov tsev kawm ntawv muaj kev txom nyem dua	Tsaug thiab kev thauj mus los tsis deb	Txhim kho tau EL kev pabcuam los ntawm ob txoj hauv kev kawm lus
50% txo hauv cov tsev kawm ntawv uas muaj ntau tshaj 350 tus menyuum		Muaj kev nkag tau kawm sib npaug rau cov magnet tsev kawm ntawv kev nthuav qhia
Nce kev tuaj sau npe kawm hauv North Mpls		
Cov hoob kawm tsawg hauv Southwest Mpls		



# Cov Kauj Ruam Tom Ntej hauv Comprehensive District Design

- Qhia thawj qho ntawm kev pib sau theem 2 kev ua ntawm cov magnet tsev kawm ntawv rau cov Board thaum lub 12 Hlis 12 pawg Committee of the Whole kev sibtham.
- Nrog kev tawm suab los ntawm cov Board, thiab qhia ntawm Board Kev Xav Tau, kho cov kev pom zoo hauv qho Ciaj Ciam Kev Kawm Paub thiab lwm yam hauv qhov CDD los tsim kev qhia thiab kev tawm suab los hauv lub zejzos kev tuaj mloog/sibtham uas tau muab teem li thaum lub 1 Hli 21 thiab 2 Hlis 19, 2020.
- Sib sau zejzos kev tawm suab los hauv ib qho CDD Xav Tau Kev Nug Lus muaj los ntawm lub 1 Hlis 8-24, 2020.

# Cov Kauj Ruam Tom Ntej hauv qhov CDD

- Muab los tso ua ke ntawm zejzos kev tawm suab thiab qhov EDIA (Equity and Diversity Impact Assessment) cov cai thiab kev sau menyuam npe kawm pom zoo, tsim qhov Comprehensive District Design uas yuav siv rau cov Board thaum lub 3 Hlis 10 pawg Board kev sibtham.
- Kev pom zoo kawg los ntawm qhov kev ua no muaj thaum lub 4 Hlis Broad kev sibtham.
- Kev los feeb ua ntawm qhov kev pom zoo ua yuav pib rau thaum lub Fall 2021, kev los feeb ua yuav siv li ob peb lub xyoos.

# Appendix

# Kev Kawm Tshwj Xeeb

Kev nthuav qhia tshwj xeeb thoob nroog:

- Li tau npaj lawm, tsim ntxiv rau hom kev ua
- Muab kev txhawb mus raws qhov pib ua txog rau ib qhov ua tau tiav
- Hom kev ua nrog rau hauv: menyuam chaw nyob, menyuam kev kawm xav tau, thiab ntau yam kev nthuav qhia txog rau kev kawm hauv chav kawm rau txhua cov ciao kawm.
- Cov placements yuav muab los saib thiab kho hauv qhov kev kawm paub thiab raws txhua lub xyoo.

# Specialty School Kev Txhais

- **Specialty schools** muaj kev kawm zoo, tabsis muaj qhov tsim kho kom muaj kev sau npe tuaj kawm ntau los hauv ib cheeb tsam kev kawm. Vim qhov kev sib koom ua ke tsis yog thawj lub homphiaj, tsis muaj tsoom fwv loj cov integration nyiaj los rau cov specialty tsev kawm ntawv. Kev thauj mus los tuaj sab nraum tuaj yuav tsis muaj. Cov specialty tsev kawm ntawv yog tseg rau cov elementary schools thiab tsis nce mus ntxiv. Rau qhov homphiaj kev kawm no, nws yog hais tias cov zejzos tsev kawm ntawv yuav tau thov mus rau cov chaw muaj specialty kev npaj qhia, uas yuav tau lossis tsis tau nyob raws ntawm lub district cov kev muaj tseg.



# Specialty Tsev Kawm Ntawv Cov Kev Xav

Lub sijhawm rau kev los tsim muaj thiab ua ntawm cov specialty tsev kawm ntawv tseem tsis tau txiav txim, tabsis cov yuav muaj hauv cov specialty tsev kawm ntawv yog:

- Lawv yeej zoo tabsis tsis sib tw nrog rau cov magnets
- Lawv ua raws lub zejzos kev nyiam thiab xav tau kom muaj kev tuaj sau npe coob
- Lawv tsis muaj ntau nyob rau hauv lub district
- Yeej ruaj khov tsis yuav kev pab ntxiv los hauv lub district mus rau tsev kawm ntawv cov nyiaj txiag
- Lub tsev kawm ntawv muaj chaw dav/loj
- Tsis tas yuav muaj kev thauj mus los ntau
- Kev ua pom zoo rau cov ntaub ntawv